

BRONX CRANK TABLE

www.retro.net/shop/bronx-crank-table/



- Starting prices include a 96" x 40" steel top
- 12" crank wheels that adjust the top from 30" dining height to 42" bar height
- 200+ rivets and bolts
- 2" thick solid hardwood top or plate steel top, both with metal trim and bolted corners
- Hardwood selection: Worn Oak, Walnut, Reclaimed Boxcar Oak, Cherry, Mahogany
- Reclaimed boxcar oak top thickness varies from 1.25" to 1.5"
- Available finishes: Aged Red, Natural Steel, Custom colors available
- 450-550 lbs approximate weight
- Custom sizes/options available (30% upcharge may apply)

Starting at \$15,795

Base only \$13,695

Trade pricing available. See Trade Page at:

<https://www.retro.net/trade-pricing/>



Phoenix, Arizona USA (602) 322-1111



More information at: www.retro.net

INDUSTRIALUX CRANK TABLE

<http://www.retro.net/shop/industrialux-crank-table/>



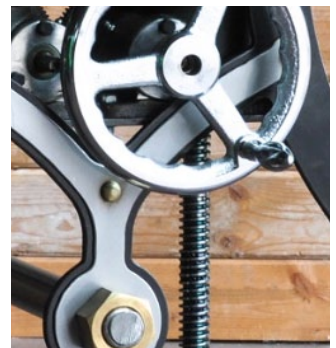
- Starting price includes 96" x 40" steel top
- With an 8" crank wheel, it adjusts from 30" dining height to 42" bar height
- Tops: Walnut, Reclaimed Boxcar Oak, Worn Oak, Mahogany, Cherry, Steel, Glass, Concrete
- Hand crafted of steel and brass
- Dual crank handles, one on each side
- Custom sizes/options available (30% upcharge may apply)

Starting at \$15,795

Base only \$13,695

Trade pricing available. See Trade Page at:

<https://www.retro.net/trade-pricing/>



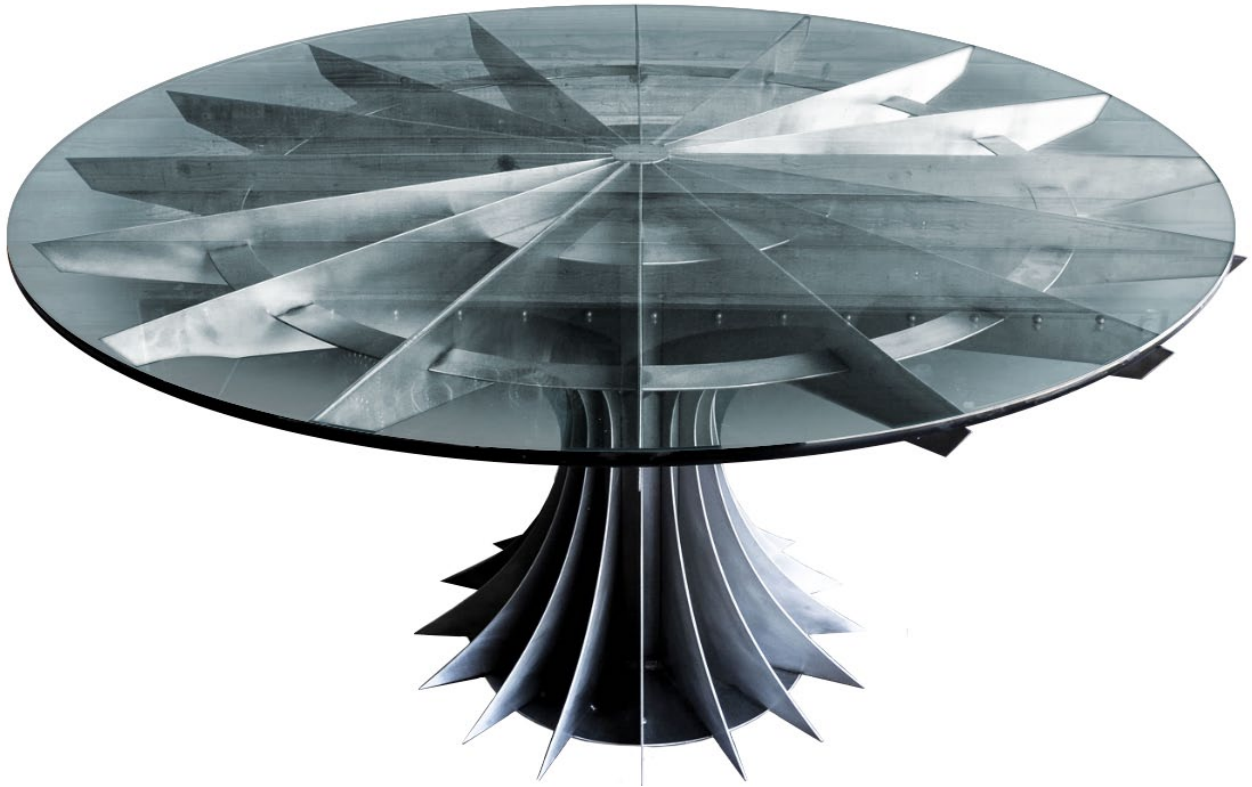
Phoenix, Arizona USA (602) 322-1111



More information at: www.retro.net

COMPRESSOR TABLE

<http://www.retro.net/shop/compressor-table/>



- Polished steel base
- 60" round glass top
- Available in many sizes and shapes
- 30" height
- Custom sizes/options available (30% upcharge may apply)

Starting at \$7,395

Trade pricing available. See Trade Page at: <https://www.retro.net/trade-pricing/>



Phoenix, Arizona USA (602) 322-1111



More information at: www.retro.net

HURE CRANK TABLE

<http://www.retro.net/shop/hure-crank-table/>



- Starting price includes 96" x 40" steel top
- Four, 3-ton crank mechanisms to adjust from 30" dining to 42" bar height
- Can be built ADA compliant
- Available with various base finishes and tops (steel, hardwoods, concrete, glass, stone)
- Crank handles on both sides
- Custom sizes/options available (30% upcharge may apply)



Starting at \$14,695

Base Only \$12,595

Trade pricing available. See Trade Page at:

<https://www.retro.net/trade-pricing/>



Phoenix, Arizona USA (602) 322-1111



More information at: www.retro.net

INDUSTRIALUX DINING TABLE

<http://www.retro.net/shop/industrialux-dining-table/>



- Starting price includes 96" x 40" steel top
- Height: 30"
- Tops: Walnut, Reclaimed Boxcar Oak, Worn Oak, Mahogany, Cherry, Steel, Glass, Concrete
- Hand crafted of steel and brass
- Custom sizes/options available (30% upcharge may apply)

Starting at \$5,895

Base Only \$3,795

Trade pricing available. See Trade Page at:

<https://www.retro.net/trade-pricing/>



Phoenix, Arizona USA (602) 322-1111



More information at: www.retro.net

TRAIN CRANK TABLE

<http://www.retro.net/shop/train-crank-table/>



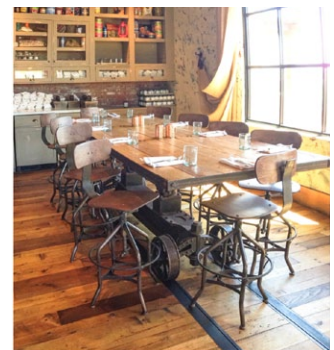
- Starting price includes 96" x 40" steel top
- Height adjusts from 30" dining height to 42" bar height
- Base: Natural Steel or Rust finish
- Top: Distressed oak plank top with bolted corner metal trim, or steel top (custom tops available)
- 12.5" handmade casters
- 4 wheel steering and brakes for moving it around and keeping it in place
- Fully customizable
- Table with a 96" top will have a shortened base to allow for legroom
- 850 lbs weight for 10' version (approximate)
- Custom sizes/options available (30% upcharge may apply)

Starting at \$14,695

Base Only \$12,595

Trade pricing available. See Trade Page at:

<https://www.retro.net/trade-pricing/>



Phoenix, Arizona USA (602) 322-1111



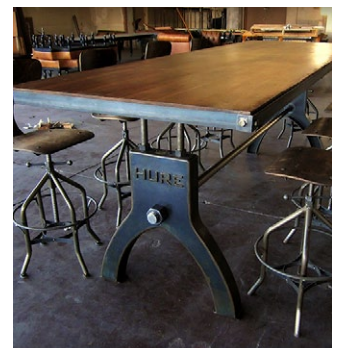
More information at: www.retro.net

HURE DINING TABLE

<http://www.retro.net/shop/hure-dining-table/>



- Starting price includes 96" x 40" steel top
- The base is built with 1/4" thick steel
- Large connecting screw has a 2" diameter with a 3" nut that holds the two bases together
- Standard Dimensions:
 - 96" long x 40" wide x 30" high (dining height)
 - 96" long x 40" wide x 42" high (bar height)
 - 120" long x 48" wide x 30" high (dining height)
 - 120" long x 48" wide x 42" high (bar height)
- Available top choices:
Cherry, Mahogany, Worn Oak, Walnut and Steel. Metal underlay trim with bolted corners are standard, but can be deleted. Additional rivets available for the metal trim at additional charge
- Custom sizes/options available (30% upcharge may apply)



Starting at \$5,595

Base Only \$3,495

Trade pricing available. See Trade Page at:

<https://www.retro.net/trade-pricing/>

Phoenix, Arizona USA (602) 322-1111



More information at: www.retro.net

GLOSSY HURE BAR TABLE

<http://www.retro.net/shop/glossy-hure-bar-table/>



- Starting price includes 96" x 40" polished steel top in Bar Height (42"H)
- Polished steel top with powder coat clear
- Powder coat finish
- Optional wood tops: Mahogany, Walnut, Worn Oak, Reclaimed Boxcar Oak, Cherry
- Casters optional
- Custom sizes/options available (30% upcharge may apply)

Starting at \$6,595

Base Only \$4,495

Trade pricing available. See Trade Page at:

<https://www.retro.net/trade-pricing/>



Phoenix, Arizona USA (602) 322-1111



More information at: www.retro.net

FLOYD DINING TABLE

<http://www.retro.net/shop/floyd-dining-table/>



- Starting price includes 96" x 40" steel top in dining height (30"H)
- Bottom plates are 1 3/8" thick solid steel making it stable for large tops
- Vintage patina
- It would support a 10' top well, or use two bases to support a 20' top
- Cherry, Mahogany, Worn Oak, or Walnut top available. 2" thick solid hardwood or plate steel top with riveted metal trim. We include bolted corner protectors on the trim for rectangular tables. Round tables have riveted trim on the side
- Single pedestal base, 28" square footprint, or 40" for larger tops
- Standard top size: 96" x 40", 120" x 48", & 60" round
- Base Weight: around 400-600 lbs / Top Weight: around 350 – 500 lbs)
- Custom sizes/options available (30% upcharge may apply)



Starting at \$7,395

Base Only \$5,295

Trade pricing available. See Trade Page at:

<https://www.retro.net/trade-pricing/>

Phoenix, Arizona USA (602) 322-1111



More information at: www.retro.net

POST INDUSTRIAL TABLE

<http://www.retro.net/shop/post-industrial-table/>



- Starting price includes 96" x 40" steel top
- Standard top size: 96" x 40" or 120" x 48"
- Casters optional, standard sizes use 4 casters
- Standard Height: 30" or 42"
- Large Acme screws to support the top
- Cherry, Mahogany, Worn Oak, or Walnut top available. 2" thick solid hardwood or plate steel top with metal trim. We include bolted corner protectors on the trim
- Custom sizes/options available (30% upcharge may apply)



Starting at \$7,395

2 Base Legs Only \$5,295

Trade pricing available. See Trade Page at:

<https://www.retro.net/trade-pricing/>

Phoenix, Arizona USA (602) 322-1111



More information at: www.retro.net

FIREHOUSE TABLE

<http://www.retro.net/shop/firehouse-table/>



- Starting price includes 96" x 40" steel top
- 30" height
- Available in just about any size or finish
- Optional tops: Walnut, Worn Oak, Mahogany, Cherry
- Structural beams and bolts
- Custom sizes/options available (30% upcharge may apply)

Starting at \$5,695

Base Only \$3,595

Trade pricing available. See Trade Page at:

<https://www.retro.net/trade-pricing/>



Phoenix, Arizona USA (602) 322-1111



More information at: www.retro.net

LIBERTY DINING & BAR HEIGHT TABLE

<http://www.retro.net/shop/liberty-dining-and-bar-height-table/>



- Starting price includes 60" round steel top
- Round, square and rectangular tops available
- Available in 30" or 42" height
- Top options: Glass, Walnut, Cherry, Reclaimed Boxcar Oak, Worn Oak, Mahogany, Concrete
- Can use two bases for a larger top
- Custom sizes/options available (30% upcharge may apply)



Starting at \$7,395

Dining Height Base Only \$5,295

Trade pricing available. See Trade Page at:

<https://www.retro.net/trade-pricing/>



Phoenix, Arizona USA (602) 322-1111



More information at: www.retro.net

WEDNESDAY TABLE

<http://www.retro.net/shop/industrial-cafe-table/>



- Starting price includes 30" x 30" mahogany top, with bolted corner metal trim, and table base
- 30" height standard, optional counter and bar height available
- 2" thick solid kiln dried hardwood
- Riveted trim or wood edge is optional
- Larger tops available in various shapes: square, rectangular, circular
- Various tops available: Worn Oak, Mahogany, Walnut, Cherry, Steel, Concrete
- Leveling glides with nylon feet included
- 83 lb weight
- Custom sizes/options available (30% upcharge may apply)



Starting at \$1,995

Trade pricing available. See Trade Page at:

<https://www.retro.net/trade-pricing/>

Phoenix, Arizona USA (602) 322-1111



More information at: www.retro.net

CRANK TABLE

<http://www.retro.net/shop/adjustable-height-crank-table/>



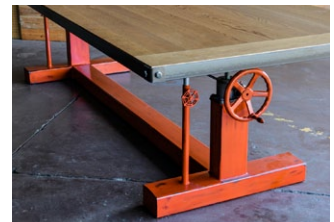
- Starting prices include a 96" x 40" top
- Adjusts in height from 28" – 38"
- 10" cast iron crank wheel
- Metal trim and bolted corners
- Standard Size: 96" x 40" and 120" x 48" (custom sizes available, upcharge)
- Casters are optional
- Custom options include aged paint, casters, tilting architect style top...
- 350-450 lbs approximate weight
- Custom sizes/options available (30% upcharge may apply)

Starting at \$8,395

Base only \$6,295

Trade pricing available. See Trade Page at:

<https://www.retro.net/trade-pricing/>



Phoenix, Arizona USA (602) 322-1111



More information at: www.retro.net

GLOSSY CRANK BAR TABLE

<http://www.retro.net/shop/glossy-crank-bar-table/>



- Starting price includes 96" x 40" polished steel top
- 30" to 42" adjustable height
- Polished steel top with powder coat clear
- Powder coat finish
- Optional wood tops: Mahogany, Walnut, Worn Oak, Reclaimed Boxcar Oak, Cherry
- Casters are optional
- 425 lbs (estimated weight)
- Custom sizes/options available (30% upcharge may apply)

Starting at \$9,495

Base only \$7,395

Trade pricing available. See Trade Page at:

<https://www.retro.net/trade-pricing/>



Phoenix, Arizona USA (602) 322-1111



More information at: www.retro.net

I BEAM DINING TABLE

<http://www.retro.net/shop/i-beam-dining-table-conference-table/>



- Starting price includes 96" x 40" steel top
- 30" height standard
- Bases are crafted from riveted thick gauge steel
- 2" thick solid hardwood or plate steel top with riveted metal trim. We include bolted corner protectors on the trim for rectangular tables. Round tables have riveted trim on the side
- Custom sizes/options available (30% upcharge may apply)

Starting at \$7,395

Base only \$5,295

Trade pricing available. See Trade Page at:

<https://www.retro.net/trade-pricing/>



Phoenix, Arizona USA (602) 322-1111



More information at: www.retro.net

A FRAME DINING TABLE

<http://www.retro.net/shop/a-frame-dining-table-desk/>



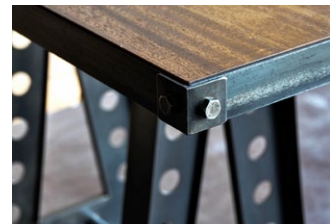
- Starting price includes 96" x 40" steel top
- 30" height standard
- Made out of heavy gauge aged steel
- Two connecting rods with large nuts that support and join the bases
- Steel top must have metal trim
- Wood tops made of solid 1.75" thick hardwood
- Various tops available: Worn Oak, Mahogany, Walnut, Cherry, Steel
- Custom sizes/options available (30% upcharge may apply)

Starting at \$5,295

Base only \$3,195

Trade pricing available. See Trade Page at:

<https://www.retro.net/trade-pricing/>



Phoenix, Arizona USA (602) 322-1111



More information at: www.retro.net

FRENCH COLUMN TABLE

<http://www.retro.net/shop/french-column-table/>



- Starting price includes 30" diameter steel top
- 30" height
- 1" solid steel plate for the main supports
- Hundreds of rivets
- Various sizes available
- Top options: Stone, Concrete, Cherry, Mahogany, Walnut, Steel and Worn Oak
- Available in a single pedestal base, or two or three depending on top size
- Bases disassemble from top for transporting. Some assembly required (20-45 min)
- Weight is around 300-400 lbs per base depending on size
- Custom sizes/options available (30% upcharge may apply)



Starting at \$17,895

Double Base only \$15,795

Trade pricing available. See Trade Page at:

<https://www.retro.net/trade-pricing/>

Phoenix, Arizona USA (602) 322-1111



More information at: www.retro.net

SIMPLE METAL TABLE

<http://www.retro.net/shop/simple-metal-table/>



- Starting price includes 96" x 44" steel top
- 30" height, standard
- 42" height available
- Vintage powder coat clear finish
- Large round rivets on the top, available without rivets for the same price
- Bolt on legs (some assembly required)
- Custom sizes/options available (30% upcharge may apply)

Starting at \$1,895

Base only \$1,695

Trade pricing available. See Trade Page at:

<https://www.retro.net/trade-pricing/>



Phoenix, Arizona USA (602) 322-1111



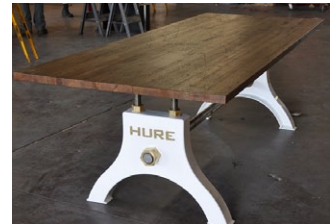
More information at: www.retro.net

HURE INDUSTRIALUX DINING TABLE

<http://www.retro.net/shop/hure-industrialux-dining-table/>



- Starting price includes a 96" x 40" steel top in a matching color
- 30" height, standard
- Each base says "Hure" on the face in solid brass
- Top options: Stone, Concrete, Cherry, Mahogany, Walnut, Steel and Worn Oak
- Looks great with a glass or stone top!
- Custom sizes/options available (30% upcharge may apply)



Starting at \$6,895

Base only \$4,795

Trade pricing available. See Trade Page at:

<https://www.retro.net/trade-pricing/>



Phoenix, Arizona USA (602) 322-1111



More information at: www.retro.net

AEROLUX

<http://www.retro.net/shop/aerolux/>



- Starting price includes a 96" x 40" glass top
- 30" height, standard
- Tempered glass top, standard
- Polished steel frame
- Available as a desk (with optional drawers), dining table, or conference table
- Aluminum or titanium construction available (upcharge)
- Custom sizes/options available (30% upcharge may apply)

Starting at \$10,495

Trade pricing available. See Trade Page at:

<https://www.retro.net/trade-pricing/>



Phoenix, Arizona USA (602) 322-1111



More information at: www.retro.net

COUNTRY CLUB LOCKER

<http://www.retro.net/shop/mudroom-locker/>

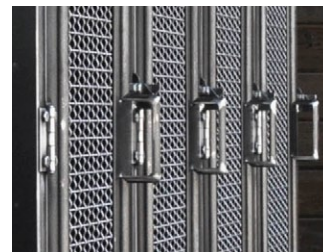


- Dimensions as shown: 72" W x 90" T x 16" D (top section)
24.25" D (bottom section)
- Reclaimed Boxcar Oak seat and top. Worn oak, walnut, mahogany, and cherry also available
- Lockers have woven wire mesh doors, and 3 internal clothing hooks under the top shelf
- Glass inserts in the doors instead of mesh available
- Bottom unit has 4 large drawers
- Also available without the bottom drawer section, or the bottom drawers only
- Custom sizes/options available (30% upcharge may apply)

Starting at \$11,595

Trade pricing available. See Trade Page at:

<https://www.retro.net/trade-pricing/>



Phoenix, Arizona USA (602) 322-1111



More information at: www.retro.net